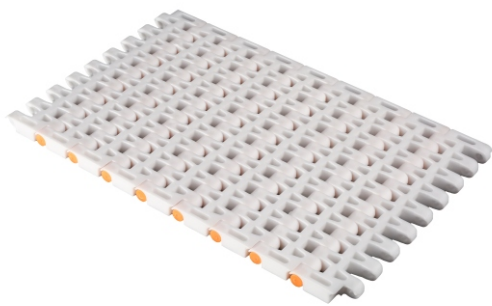
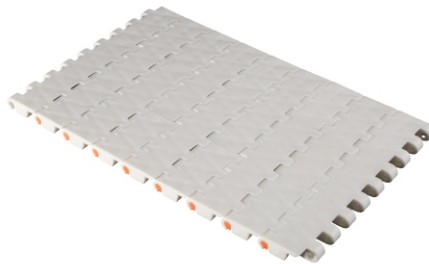




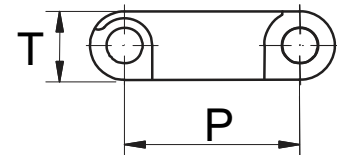
SP-2533 (STRAIGHT RUNNING)



Flush grid



Flat Top



Description	mm	inch
Pitch (P)	25.4	1
T	10	0.39
Rod (Ø)	5	0.2
Surface type	Flat / 35% open	
Color	○ ●	
Material	PP / POM	
Curve	No	

ACCESSORIES



Cleat height - 2",3"

SP-2533 (SPROCKET)

Teeth (Z)	Pcd (mm)	B	M/C		M/D	
			S	W	S	W
8	66.7	28.3	●	30		
10	82.5	36.3	★	30		
12	98.6	44.3	★	30	■ 40	30
16	130.8	60.4	★	30		
18	146.9	68.4	★	30		

* Type of bore : ★ - round & square, ■ - square, ● - round

* A - minimal distance 28 mm (1.1")

* For material availability contact our sales team

* M/C - Machined solid, M/D - Moulded solid, S - Availability, W - Sprocket Width

